



Image 1: Schörghuber is the only manufacturer on the market to offer door solutions that have been tested and certified for accessibility.

Schörghuber doors certified according to DIN 18040 Barrier-free, hygienic and aesthetic

Highly visible, easy to open and close, safe to pass through – Schörghuber barrier-free doors all meet these requirements. Schörghuber is the only manufacturer to offer complete door sets that are tested and certified for accessibility in accordance with DIN 18040. They are particularly suitable for use in public buildings such as schools, hotels, care and healthcare facilities, but also for many other building situations such as corridors, stairwells or sanitary facilities where accessibility is required.

DIN 18040 stipulates that doors must be highly visible, easy to open and close and safe to pass through. With its certified door sets tested for accessibility, Schörghuber offers architects, planners and processors planning security and a great deal of design freedom for construction projects where accessibility is crucial, such as in care and healthcare facilities or hotels. However, there is a growing demand for barrier-free solutions in schools, office and administration buildings, as well as in residential construction.

Like all Schörghuber solutions, barrier-free doors too can be combined with different functions, surface finishes and door frames. They have been fully tested and certified as a barrier-free system. This includes the door leaf, door frame, lever handle, lock, hinges, door closer and threshold seal. In addition to size and weight, the number of seals and types of fittings are key criteria for doors to be approved as accessible. The operating forces in particular play a crucial role. Operating forces refer to the force required to open and close doors. Accessible doors according to DIN EN 12217 are doors that can be opened and closed with as little effort as possible. If door closers are required, the opening torque

must not exceed size 3 in accordance with DIN EN 1154. All door sets tested by Schörghuber achieved the class required by these standards, as well as size 3, and are certified as barrier-free in accordance with DIN 18040.



The barrier-free door sets from Schörghuber are available as single- or double-leaf versions and as space-saving sliding doors without threshold. Door leaf thicknesses of 42, 50 or 70 mm are available. There is also a broad range of functions: Fire protection is guaranteed in classes T30 and T90, acoustic insulation with $R_w = 32, 37$ and 42 dB. In addition, the barrier-free door sets can be supplied with smoke protection and break-in resistance equipment in categories RC2 and RC3. Matching door frames are available in timber, steel or aluminium.

Schörghuber Spezialtüren KG

Lisa Modest-Danke

Verena Lambers

Sophie Eiling

E-mail: pr@schoerghuber.de

Download texts and images:
www.schoerghuber.de/presseforum

(2745 characters incl. spaces)

Barrier-free Schörghuber door sets in detail

Application: public buildings, sanitary and WC areas, corridors and stairwells, care and healthcare facilities, living spaces

Functions: fire protection T30 and T90, smoke protection, acoustic insulation $R_w = 32$ dB, 37 dB and 42 dB, break-in resistance equipment RC2 and RC3

Door thicknesses: 42, 50, 70, 73 mm

Version: single- and double-leaf, sliding door, solid timber hollow profiled section door

Door frames: timber frames, steel frames and aluminium frames

Optional extras: glazing cut-outs, transom panel, transom light, side elements, locks with and without anti-panic function, self-locking, multiple-point locking, lever handles in various designs, surface-mounted and concealed door closers

Images and captions:



Schörghuber Spezialtüren KG

Lisa Modest-Danke

Verena Lambers

Sophie Eiling

E-mail: pr@schoerghuber.de

Download texts and images:
www.schoerghuber.de/presseforum

Image 2: In the case of Schörghuber barrier-free doors, the complete door set is tested and certified as a system consisting of door leaf, door frame, fittings and threshold seal as a single unit.



Image 3: The individual components of Schörghuber barrier-free doors can be combined with each other and equipped with functions such as fire and smoke protection or acoustic insulation.



Schörghuber Spezialtüren KG

Lisa Modest-Danke

Verena Lambers

Sophie Eiling

E-mail: pr@schoerghuber.de

Download texts and images:
www.schoerghuber.de/presseforum

Image 4: The barrier-free door solutions from Schörghuber have been tested and certified by the Testing Centre for Construction Components in accordance with DIN 18040.



Image 5: Schörghuber supplied all the doors required for the Hotel SeeLoge in Eutin in a certified barrier-free version.

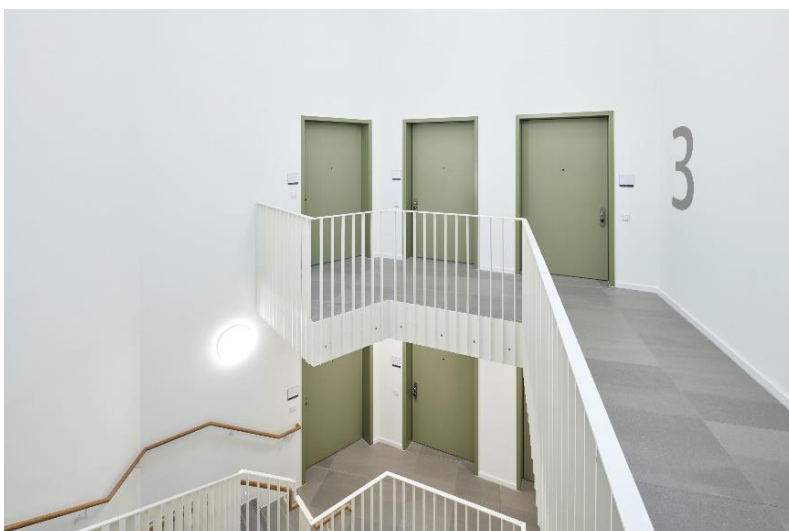


Image 6: The apartment entrance doors from Schörghuber in the retirement home in Garmisch-Partenkirchen are predominantly barrier-free, depending on user requirements.



Photos: Schörghuber

Schörghuber Spezialtüren KG

Lisa Modest-Danke

Verena Lambers

Sophie Eiling

E-mail: pr@schoerghuber.de

Download texts and images:

www.schoerghuber.de/presseforum